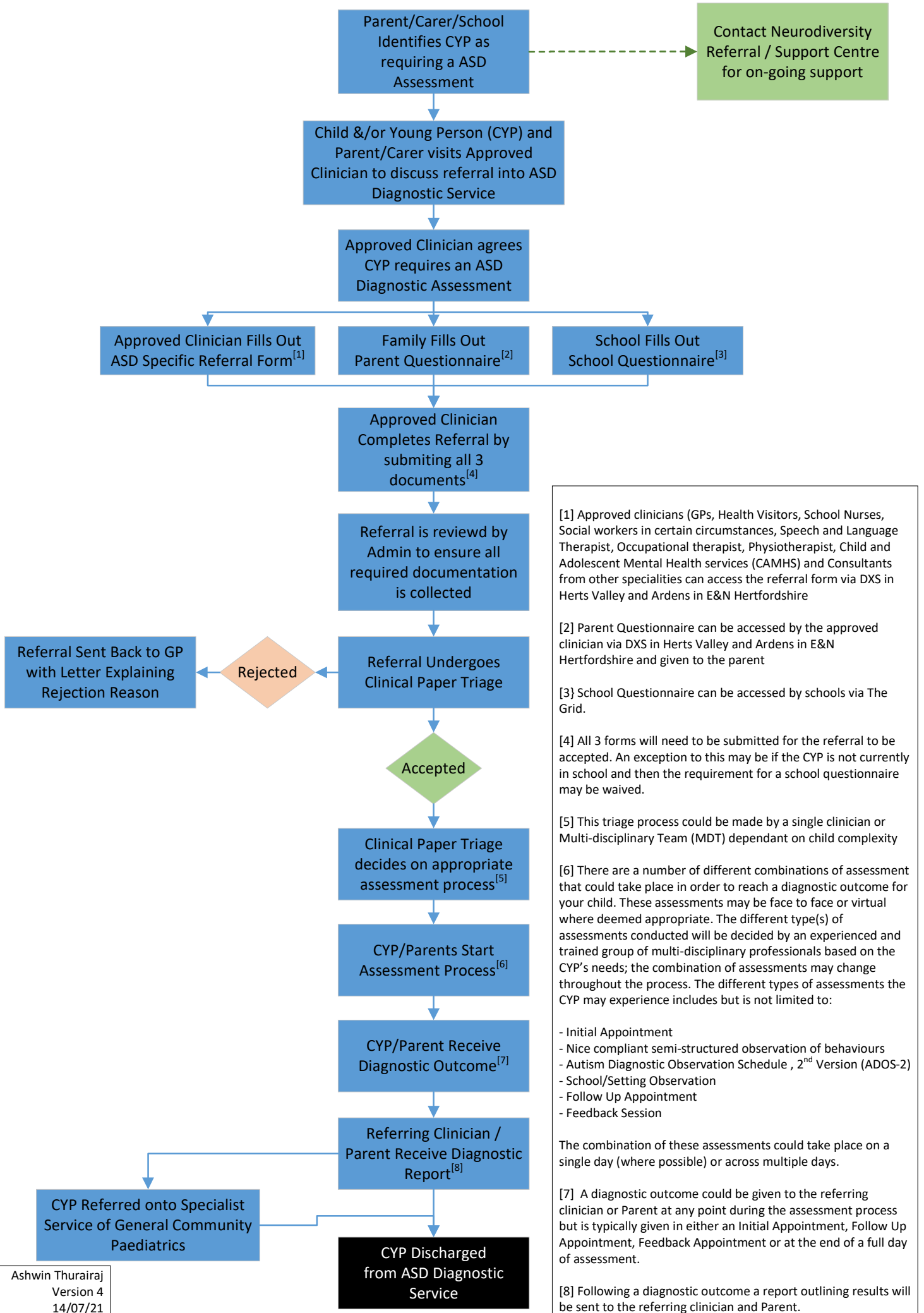


Autism Spectrum Disorder (ASD) Diagnostic Pathway



[1] Approved clinicians (GPs, Health Visitors, School Nurses, Social workers in certain circumstances, Speech and Language Therapist, Occupational therapist, Physiotherapist, Child and Adolescent Mental Health services (CAMHS) and Consultants from other specialities can access the referral form via DXS in Herts Valley and Ardens in E&N Hertfordshire

[2] Parent Questionnaire can be accessed by the approved clinician via DXS in Herts Valley and Ardens in E&N Hertfordshire and given to the parent

[3] School Questionnaire can be accessed by schools via The Grid.

[4] All 3 forms will need to be submitted for the referral to be accepted. An exception to this may be if the CYP is not currently in school and then the requirement for a school questionnaire may be waived.

[5] This triage process could be made by a single clinician or Multi-disciplinary Team (MDT) dependant on child complexity

[6] There are a number of different combinations of assessment that could take place in order to reach a diagnostic outcome for your child. These assessments may be face to face or virtual where deemed appropriate. The different type(s) of assessments conducted will be decided by an experienced and trained group of multi-disciplinary professionals based on the CYP's needs; the combination of assessments may change throughout the process. The different types of assessments the CYP may experience includes but is not limited to:

- Initial Appointment
- Nice compliant semi-structured observation of behaviours
- Autism Diagnostic Observation Schedule , 2nd Version (ADOS-2)
- School/Setting Observation
- Follow Up Appointment
- Feedback Session

The combination of these assessments could take place on a single day (where possible) or across multiple days.

[7] A diagnostic outcome could be given to the referring clinician or Parent at any point during the assessment process but is typically given in either an Initial Appointment, Follow Up Appointment, Feedback Appointment or at the end of a full day of assessment.

[8] Following a diagnostic outcome a report outlining results will be sent to the referring clinician and Parent.