

Comments, Compliments, Complaints

Hertfordshire Community NHS Trust offer high quality services and aim to be as helpful as possible. If however you are dissatisfied by our service then we would like to know so that we can make improvements.

Please contact either:

Patient Advice and Liaison Service (PALS)

Tel: **0800 011 6113**

10am to 2pm, Monday to Friday

Messages can be left outside these hours.

Email: pals.hchs@nhs.net

Patient Experience Team

Tel: **01707 388036**

9.30am to 4pm, Monday to Friday

Messages can be left outside these hours

Email: complaints.hchs@nhs.net

Hertfordshire Community NHS Trust

Units 1A & 1B
Howard Court
14 Tewin Road
Welwyn Garden City
Hertfordshire
AL7 1BW

Telephone: 01707 388000

Fax: 01707 321840

Email: communications@hchs.nhs.uk

Web: www.hct.nhs.uk

If you would like a copy of this document in LARGE PRINT, Braille or audio tape, or would like this information explained in your own language, please contact 01707 388148

Proud to 
care for you

NHS

Hertfordshire Community
NHS Trust

Out of Plaster Ankle

Self-Management Information for Patients



*This leaflet has been produced by staff working in our Outpatient
Physiotherapy teams, part of our Musculoskeletal Service*

How long will my ankle need to be in plaster for?

It usually takes between 6-8 weeks for an ankle fracture to heal.

On removal of your cast it is normal to experience the following:

- Pain or discomfort
- Stiffness
- Swelling
- Weakness
- Dry, flaky and/or discolored skin

These will improve with time, and in some cases this may take up to a year.

Treatment

Your consultant should tell you when you can weight-bear through your affected leg. It is important to try and walk as normally as your pain allows. If you have been using elbow crutches, try to reduce to one crutch (held in the opposite hand to your affected leg) as your pain allows.

To help regain normal function follow the advice below:

- To reduce the swelling, try contrast bathing. This is where you alternate between bathing your wrist in warm and cold water for 30 seconds at a time, for up to 5 minutes daily.
- Elevate the foot on cushions for short periods during the day to help reduce swelling.
- If you have had an operation, massage the scar for 5 minutes every day.
- Try to move your ankle every couple of hours.
- Try walking for short periods of time to help reduce stiffness.

Suggested Exercises:



Ankle Movements

Pull your foot up towards you. Point your foot down. Turn your foot inwards. Turn your foot outwards. Try to keep your leg still. Repeat 10 times in each direction.

Calf Stretches

Stand with one foot in front of the other, both feet pointing forwards. Lean forwards, keeping your back knee straight. Hold for 30 seconds, repeat three times.



Stand with one foot in front of the other, both feet pointing forwards. Lean slightly forwards, bending your back knee. Hold for 30 seconds, repeat three times.

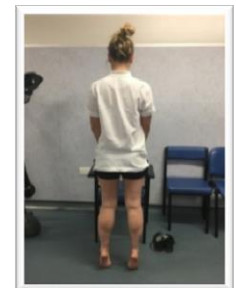
Single Leg Balance

Practice balancing on one leg for as long as you can.



Bilateral HRs

Stand with fingertips holding on to the back of a chair. Stand on your tiptoes as high as you can. Repeat until fatigued.



Gradually increase from light activities to normal activities as your pain allows.

It is normal for your ankle to ache with use and for swelling to be present after exercise and towards the end of the day for up to 12 months.

If you are worried that you are suffering from extreme pain and your symptoms are not settling with the above advice please see your GP